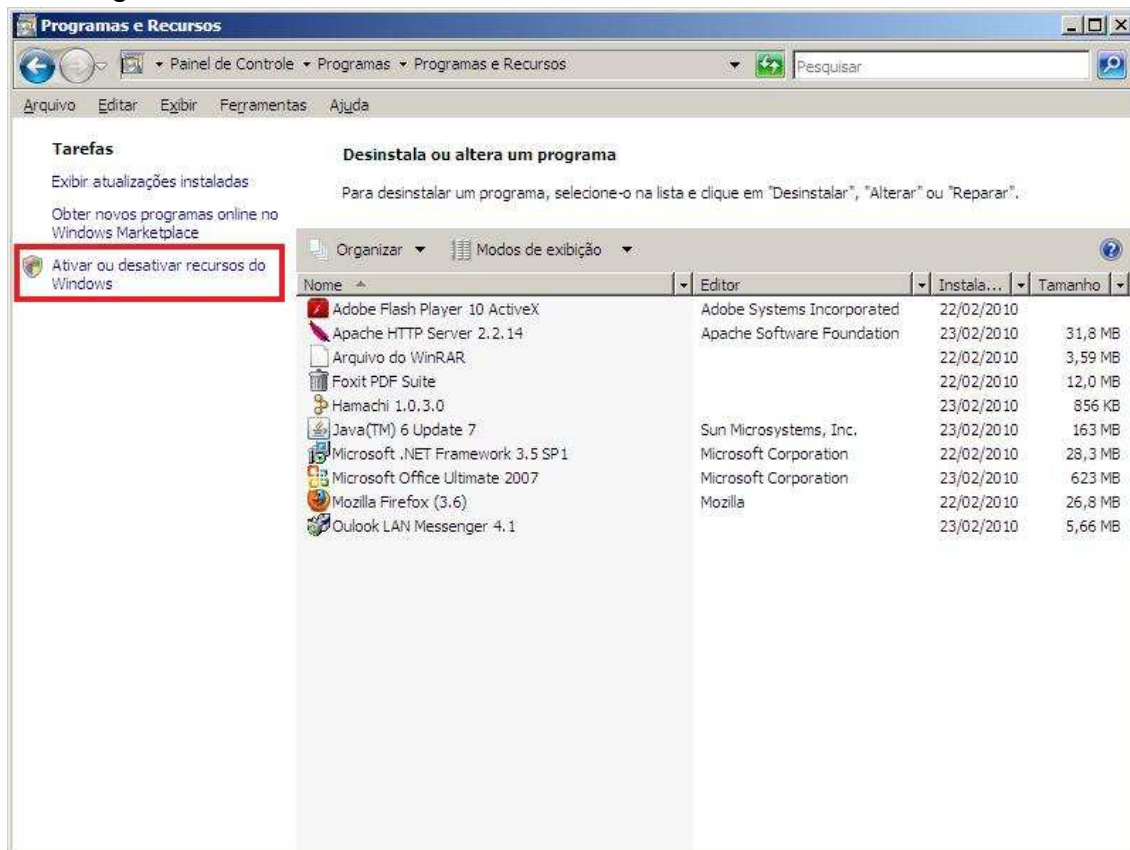
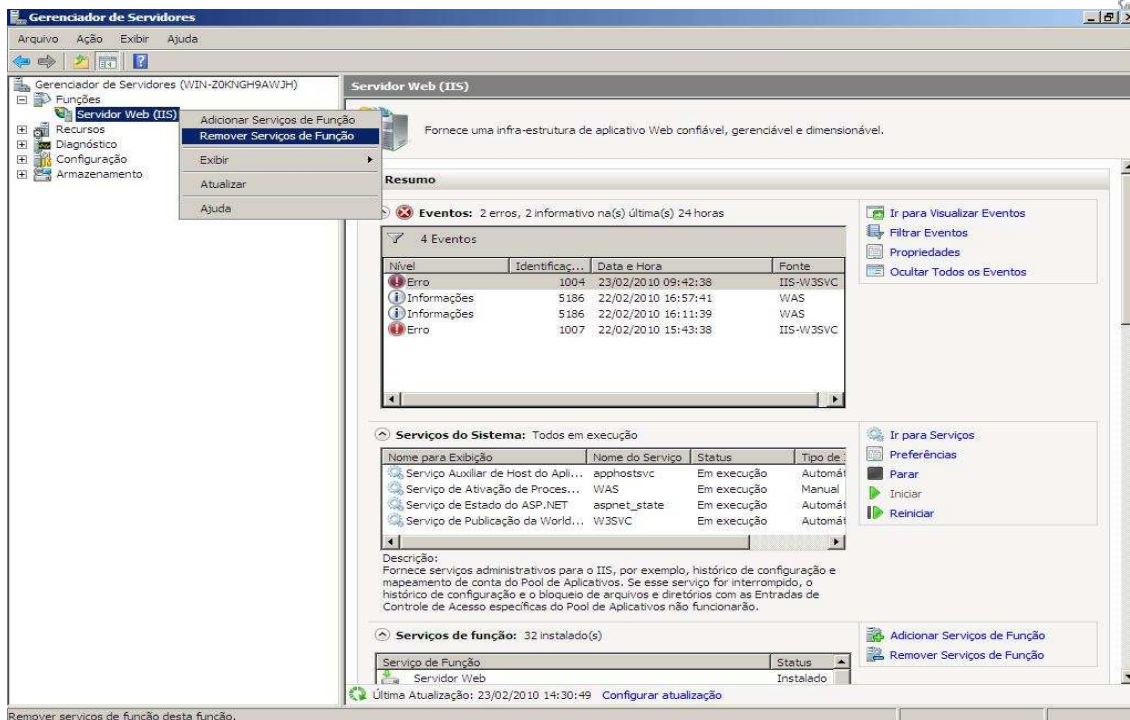


Manual Offline Com Apache

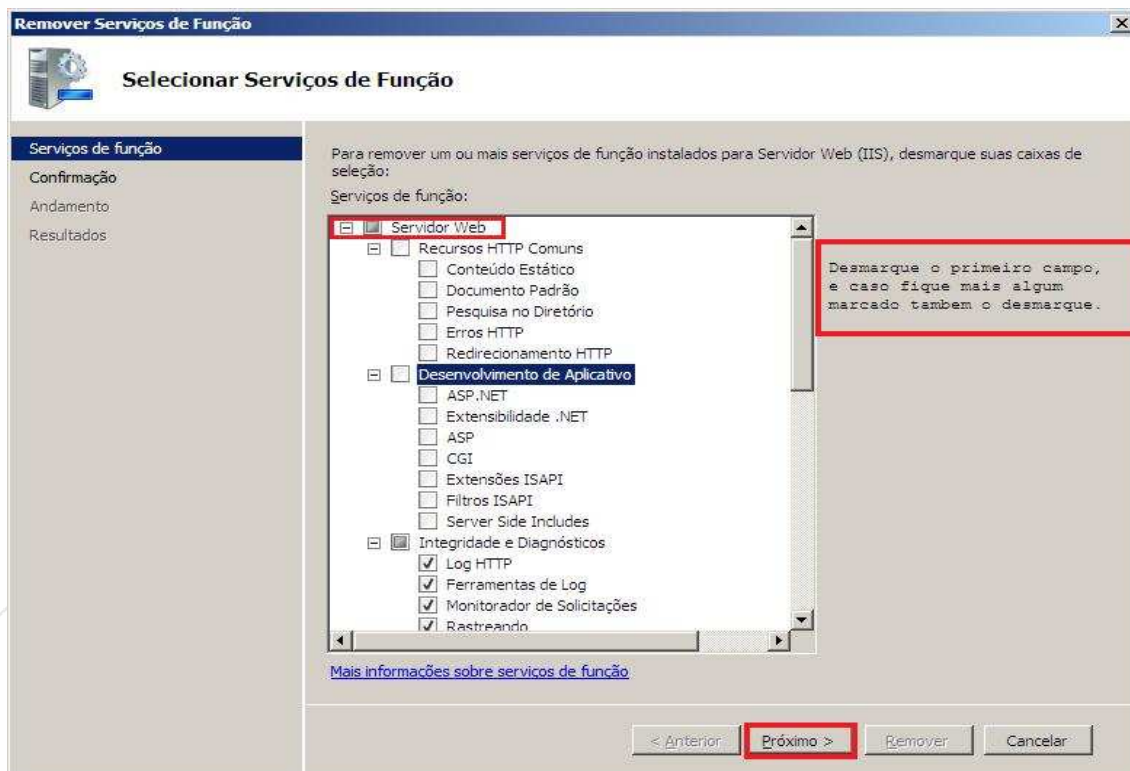
1º Desinstalar o IIS padrão do Win. Em Iniciar>Painel de Controle>Desinstalar um Programa> Ativar ou desativar recursos do Windows:



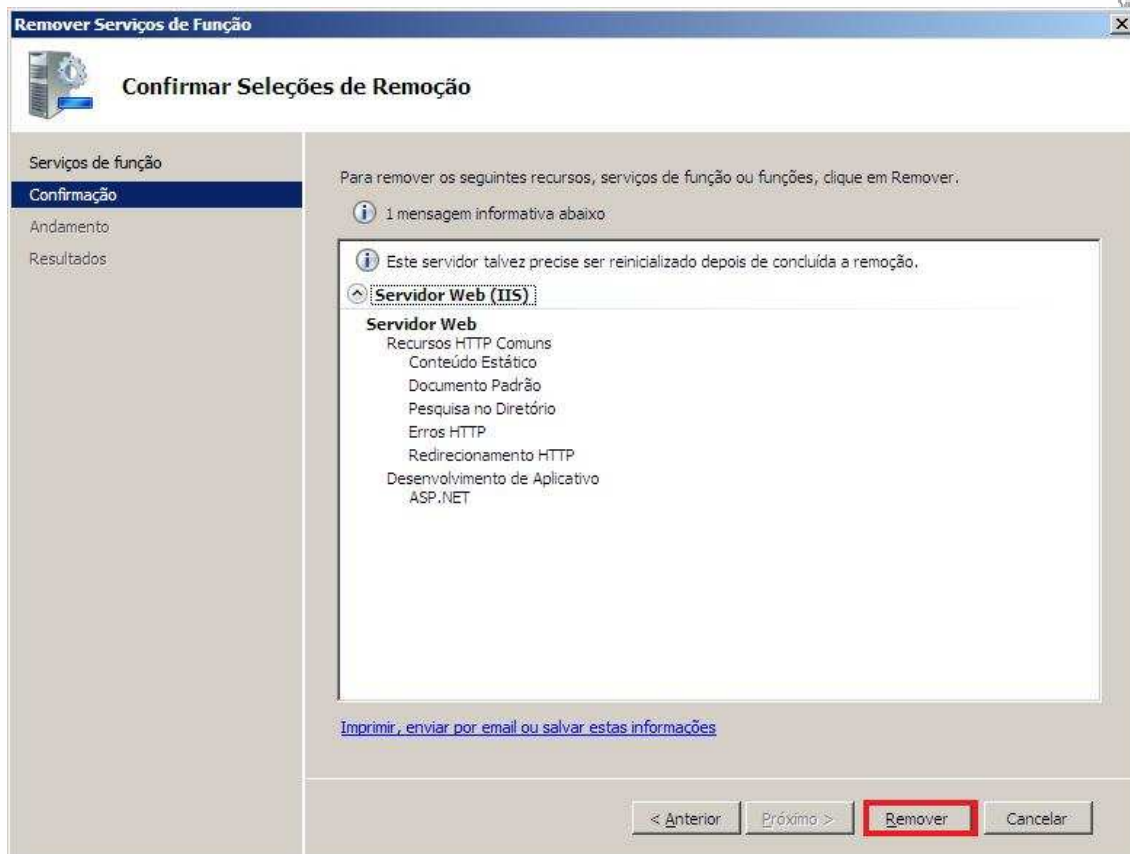
Em Funções clique com o botão direito em (IIS) e clique em remover Serviços de Função:



Desmarque todos os campos que estiverem marcados assim como segue imagem abaixo:

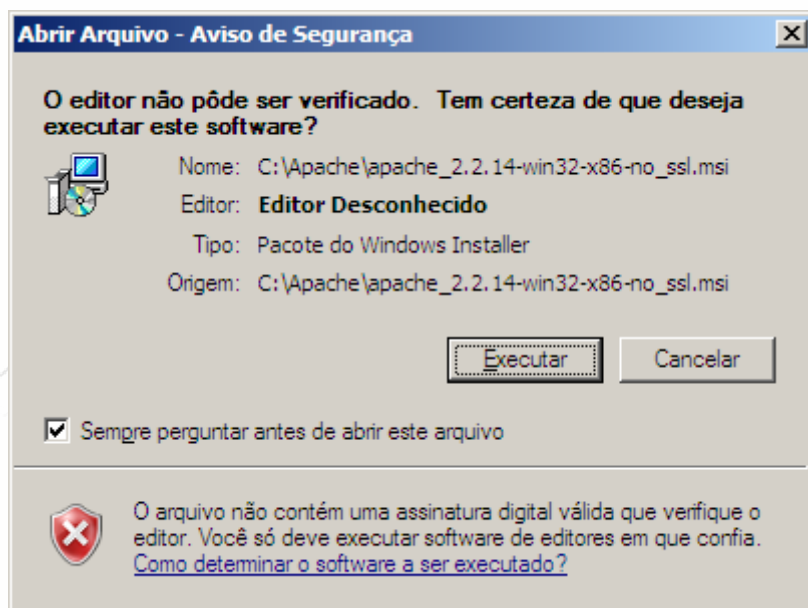


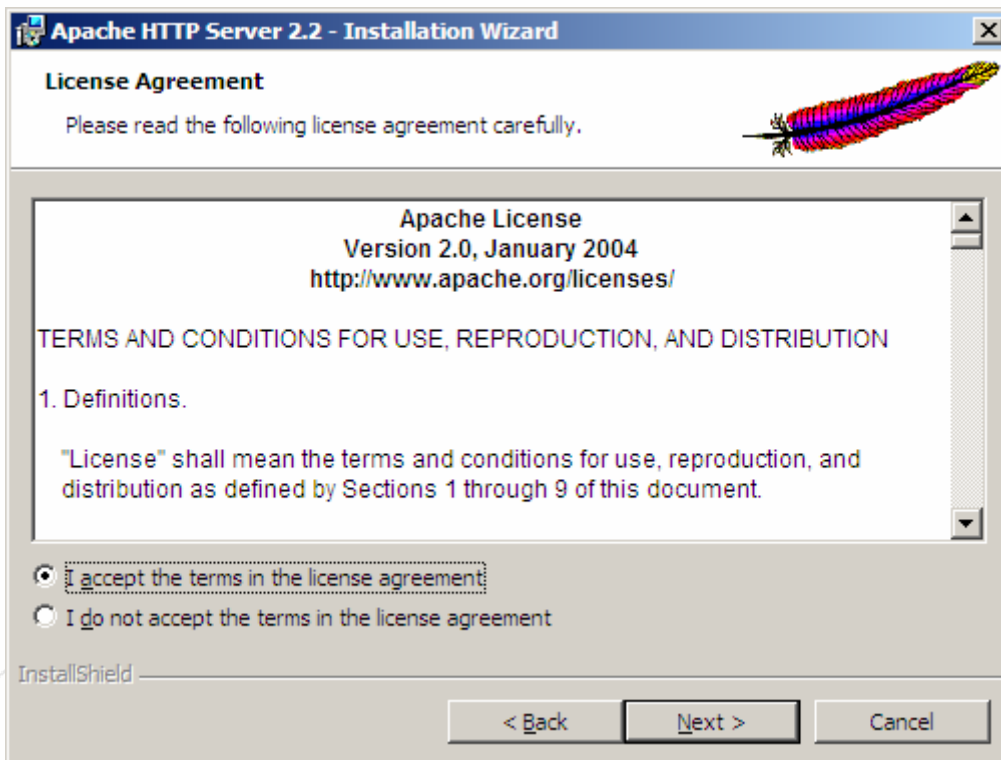
Após todos os campos desmarcados clique em "Remover" para concluir a desinstalação do IIS.

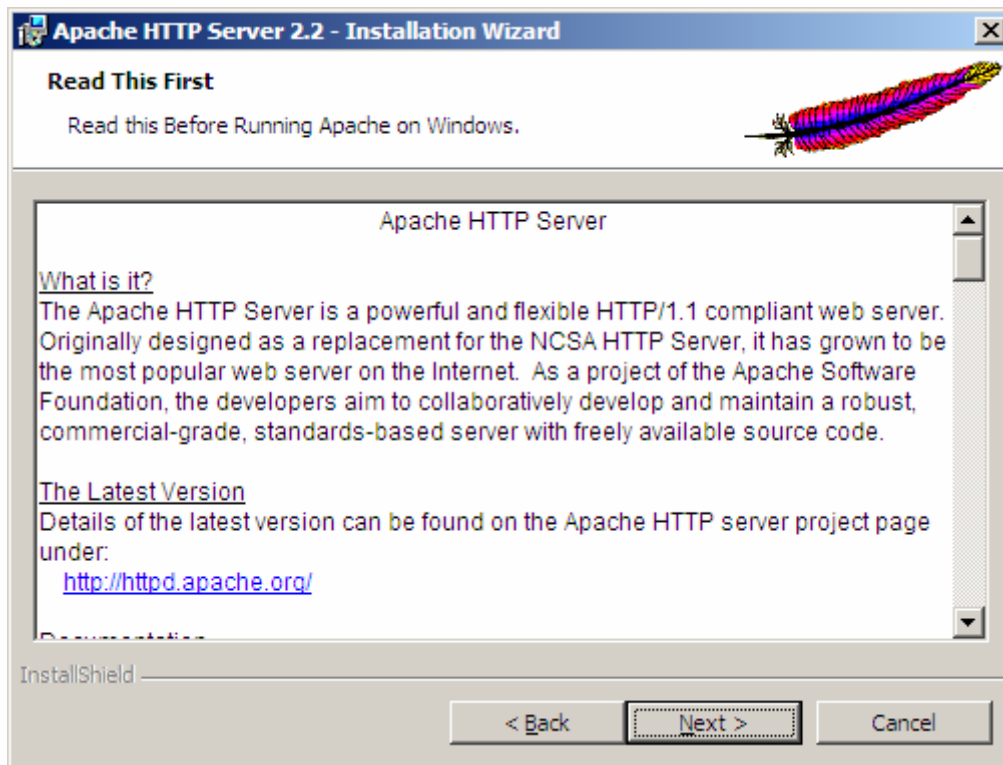


2º Baixar o Apache que fica em utilitários>Apache do <ftp://atsbh.no-ip.info:2121>

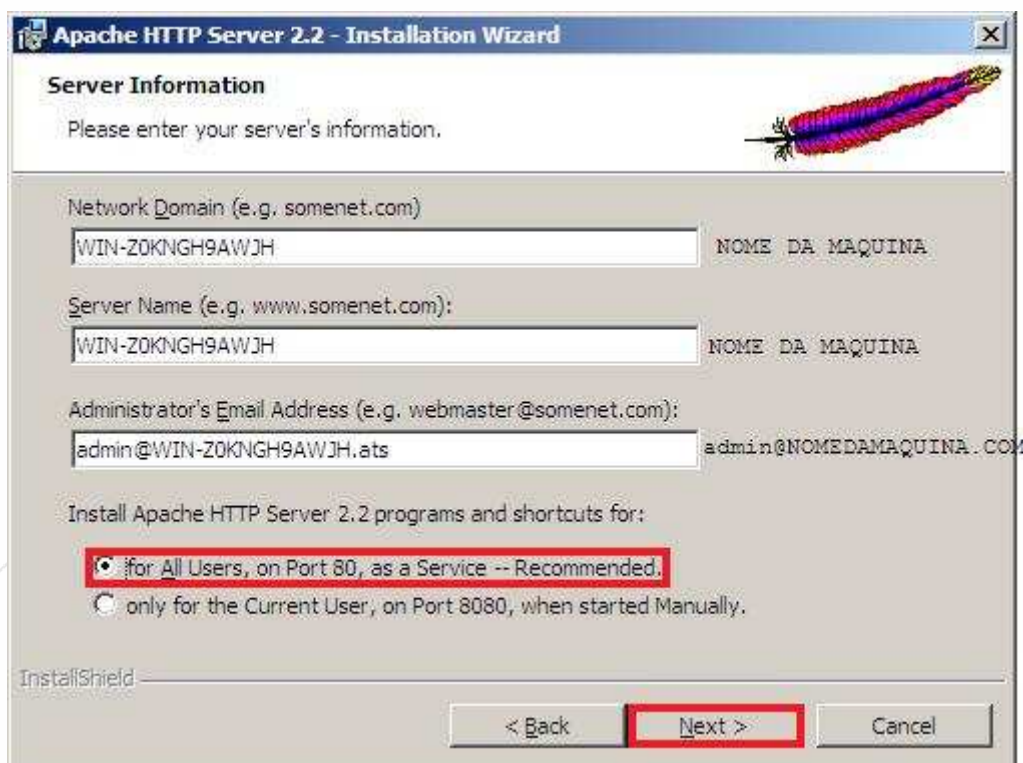
3º Instalar Apache:

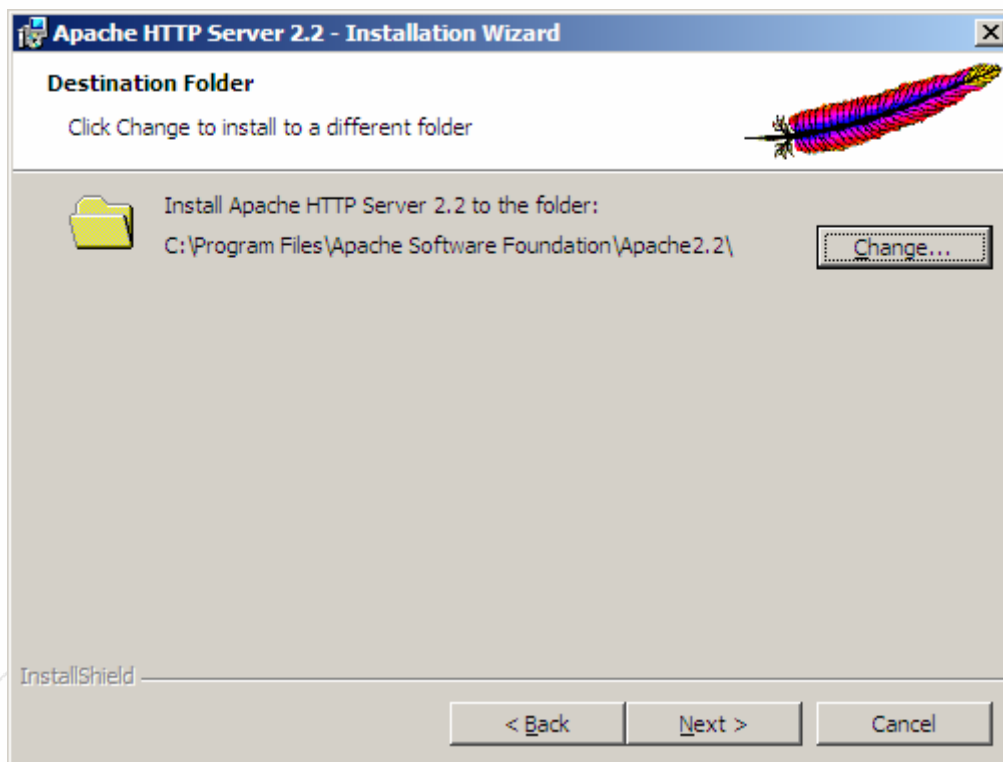
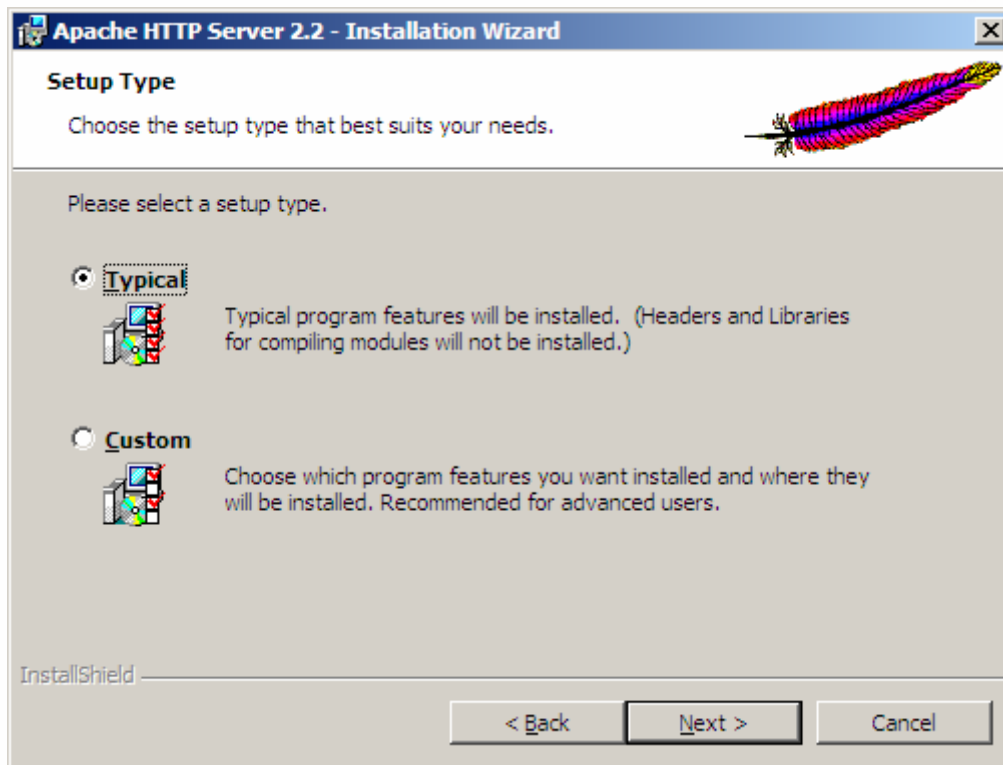


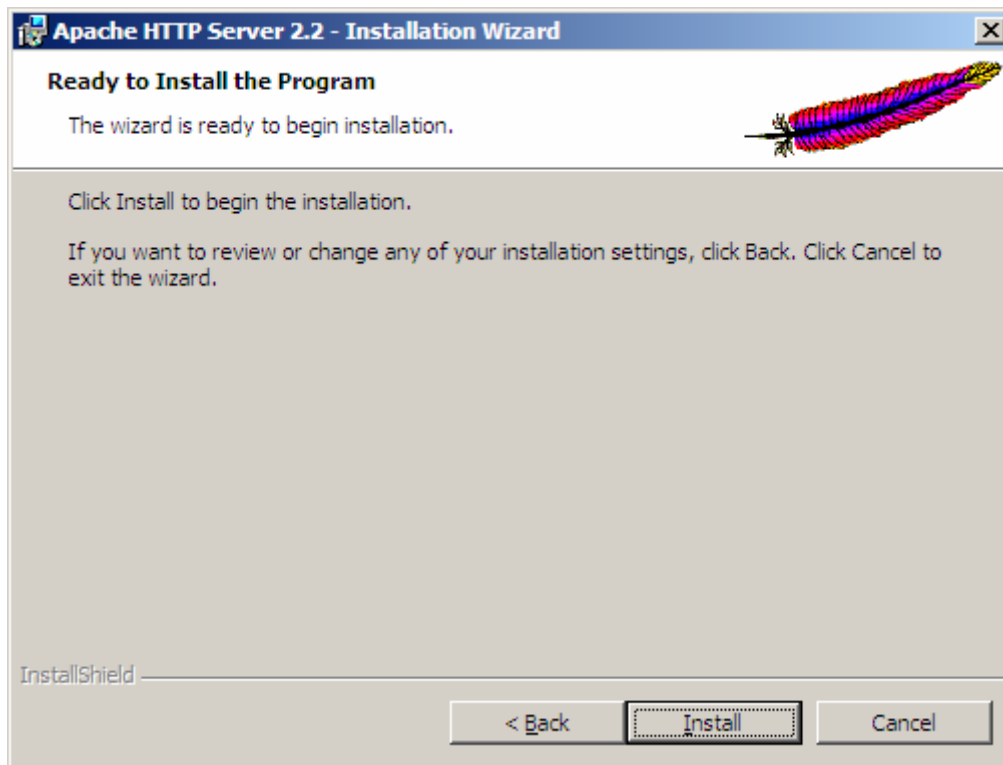




Informar dados da maquina da seguinte maneira, e marcar "for All Users, on Port 80, as a Service "







3º Criar uma pasta com o nome de “Offline” dentro do caminho:

C:\Program Files\Apache Software Foundation\Apache2.2\cgi-bin

Inglês

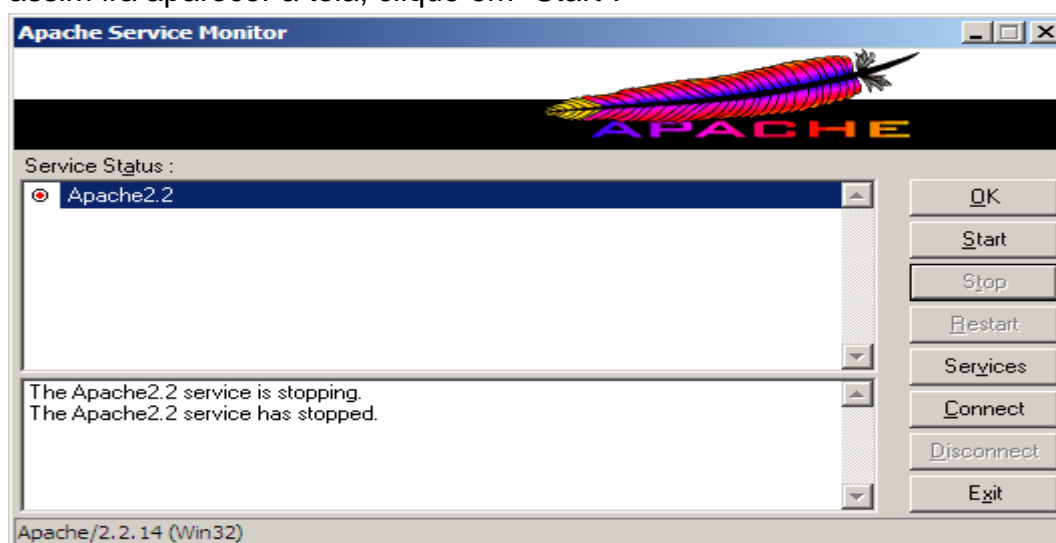
C:\Arquivos de programas\ Apache Software Foundation\Apache2.2\cgi-bin

Português

E colocar dentro da pasta criada os arquivos

Descompactados da pasta ServOffLine.rar que se encontra no FTP.

Feito isto execute o ícone do Apache que fica do lado do relógio assim ira aparecer a tela, clique em “Start”.



Feito isto abra o IE e cole o seguinte caminho no navegador:

<http://localhost/cgi-bin/Offline/ServiceOffLineCGI.exe/wsd/I ServidorOffLine>

e terá que aparecer :

```
<?xml version="1.0" encoding="utf-8" ?>
- <definitions xmlns="http://schemas.xmlsoap.org/wsdl/" xmlns:xs="http://www.w3.org/2001/XMLSchema"
  name="IServidorOffLineservice" targetNamespace="http://tempuri.org/" xmlns:tns="http://tempuri.org/"
  xmlns:soap="http://schemas.xmlsoap.org/wsdl/soap/" xmlns:soapenc="http://schemas.xmlsoap.org/soap/encoding/"
  xmlns:mime="http://schemas.xmlsoap.org/wsdl/mime/" xmlns:ns1="urn:ServidorOffLineIntf" >
- <types>
- <xs:schema targetNamespace="urn:ServidorOffLineIntf" xmlns="urn:ServidorOffLineIntf" >
- <xs:complexType name="TColecaoTabela" >
- <xs:complexContent>
- <xs:restriction base="soapenc:Array" >
  <xs:sequence />
  <xs:attribute ref="soapenc:arrayType" n1:arrayType="ns1:Tabela[]"
    xmlns:n1="http://schemas.xmlsoap.org/wsdl/" />
</xs:restriction>
</xs:complexContent>
</xs:complexType>
- <xs:complexType name="TTabela" >
- <xs:sequence>
  <xs:element name="ID" type="xs:int" />
  <xs:element name="NomeTabela" type="xs:string" />
  <xs:element name="TipoAcao" type="ns1:Tacao" />
  <xs:element name="ValorCampos" type="ns1:TColecaoValorCampoTabela" />
  <xs:element name="ChavePrimaria" type="ns1:TChavePrimaria" />
</xs:sequence>
</xs:complexType>
- <xs:simpleType name="Tacao" >
- <xs:restriction base="xs:string" >
  <xs:enumeration value="TaIncluir" />
  <xs:enumeration value="TaAlterar" />

```

Caso não apareça Faça todo procedimento novamente.
OBS: ISTO NO SERVIDOR CENTRAL!!!